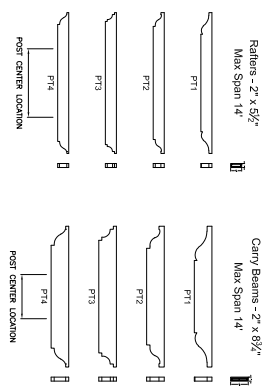


STANDARD PERGOLA PARTS

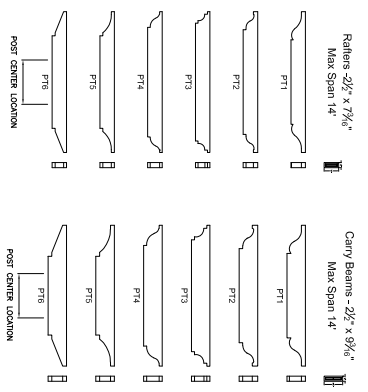


www.intexmillwork.com
 45 Mill Street
 Mays Landing, NJ, 08330
 Phone 856-293-4100
 Fax 856-293-4102

Classic Kit (not customizable)

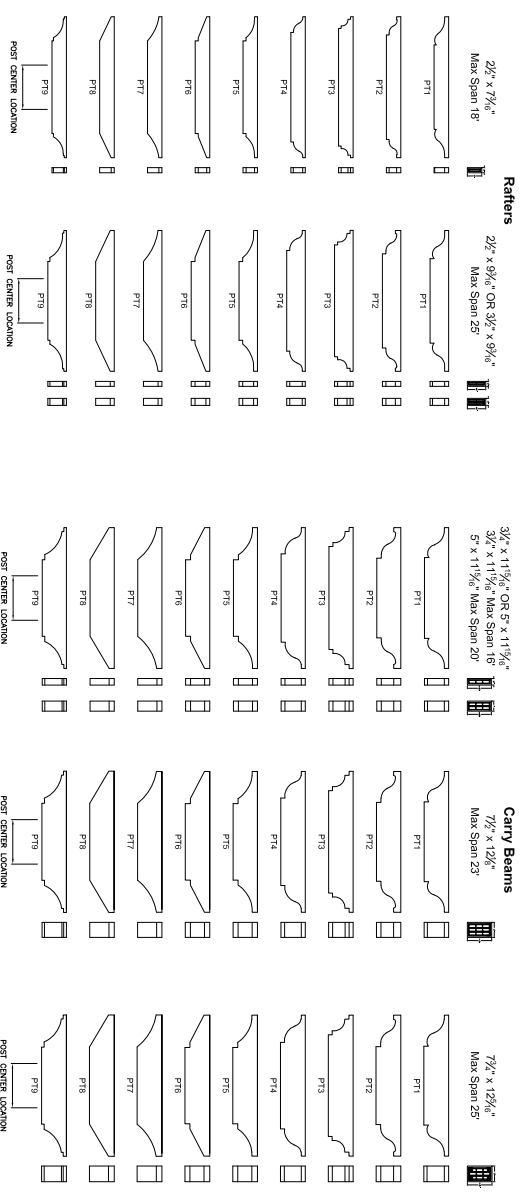


Deluxe Pergola System



Premium Pergola System

Can Support Clear Spans up to 25' x 25';
 Customizable Layouts; Engineered to Meet Code Requirements
 for 1" Ice Loads and 120 mph Wind Up-Lift

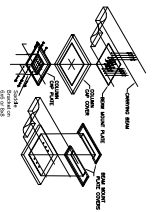


Max Rafter Span	Max Carry Beam Span	14' Span	20' Span	24' Span	25' Span
14' x 14'	14' x 14'				
14' x 20'	14' x 20'				
14' x 24'	14' x 24'				
14' x 25'	14' x 25'				

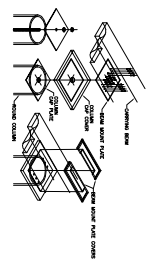
Ledger Mount Pergola



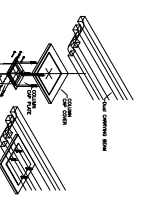
Pergola System



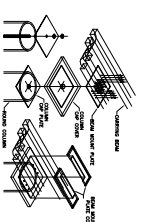
Part #EPCBBRKT1
 6x6 Post Saddle Bracket
 Part #EPCBBRKT2
 8x8 Post Saddle Bracket



Part #EPCBHCA1 - for 12" Column
 Hollow Column Assembly
 Part #EPCBHCA2 - for 14" Column
 Hollow Column Assembly



Part #EPDCBCK-9
 6x6 Saddle Bracket with 9" square
 plate for Dual Beam Assembly



Part #EPCBHCA1 - for 12" Column
 Hollow Column Assembly for Dual Beam
 Part #EPCBHCA2 - for 14" Column
 Hollow Column Assembly for Dual Beam

Premium Pergola System

Post to Beam and Beam to Rafter Connection